

VISY

# KNOW YOUR TERMINAL WITH AI VISION TECH

Track, Trace & Locate Systems to Enhance Terminal Performance




**John Lund**  
Sales & Marketing Director



SMART GATE AND TERMINAL AUTOMATION SOLUTIONS

**TOC**  
EUROPE

Stand **VISY C-74**  
Hamburg, Germany  
19 May 2026

Expand   
Your vision

# Streamlining the efficient flow of assets

- AI-powered vision technology and management platform
- Identify & digitize everything that moves in and out by road, rail, quay - and every handover in yard
- Share clean data with 3<sup>rd</sup> party systems: TOS and PDS

## 500+

Sites automated

WORLDWIDE

## 30+

Countries

ACROSS ALL CONTINENTS

## 6M+

Ops decisions

EVERY DAY

## 1994

Innovating since

30+ YEARS OF VISION TECH



# Modern AI keeps the focus

Fast, accurate, versatile - Drive cargo velocity

Puppy or Bagel?



Labradoodle or Fried Chicken?



If we can see it, we can identify it



Marred



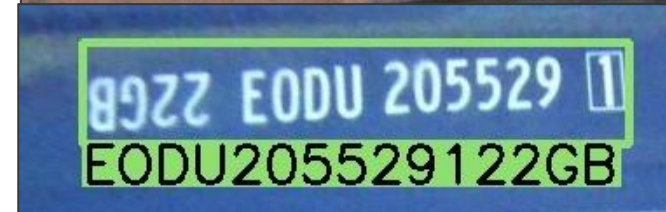
Rusted



Missing



Upside Down



# Accuracy that holds up at scale

STS audit of **41,454** STS moves

Crane	Moves	Container ID	ISO	TT	Seal	Door	IMO
STS 33	393	100%	100%	98.3%	98.3%	99.8%	96.0%
STS 34	5,227	99.7%	99.6%	99.2%	97.8%	100%	99.5%
STS 35	9,325	99.8%	99.7%	99%	96.7%	99.9%	99.9%
STS 36	12,962	99.9%	99.8%	99.6%	96.4%	99.5%	99.7%
STS 37	13,547	99.6%	99.4%	99.1%	97.3%	100%	99.9%

# 99.7%

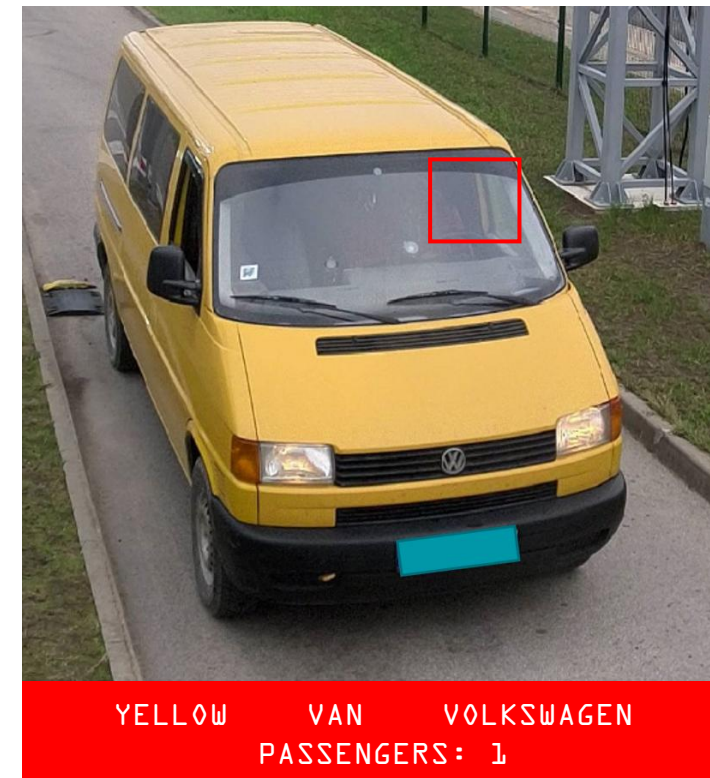
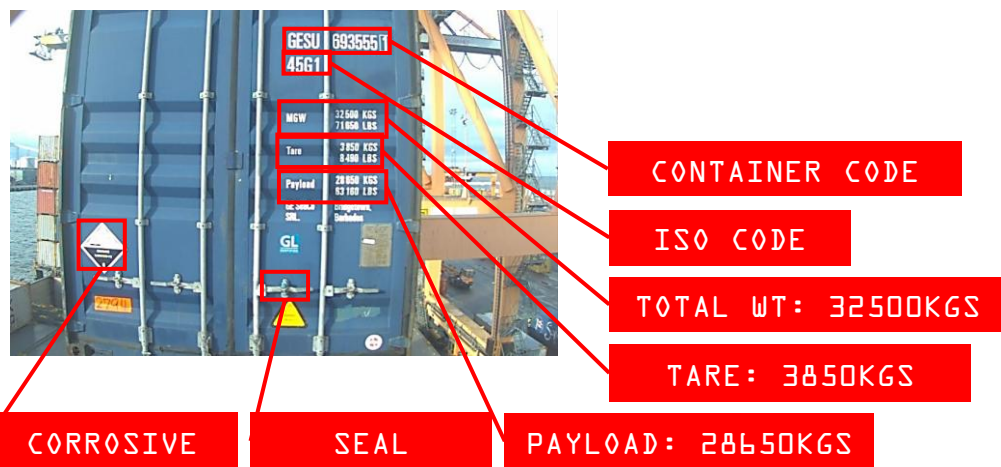
Accuracy for box ID

**41,454**

moves at one site

# A picture is worth 1,000 words

See it, ID it, Share it



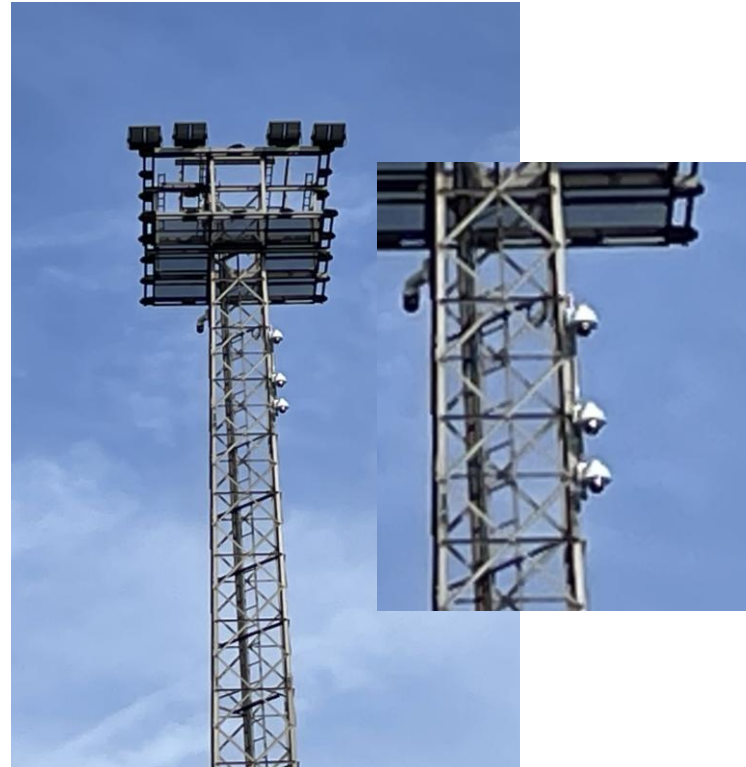
# What if we take more pictures?

Existing infrastructure with more sensors

SEE AREA DEMO AT C-74



+

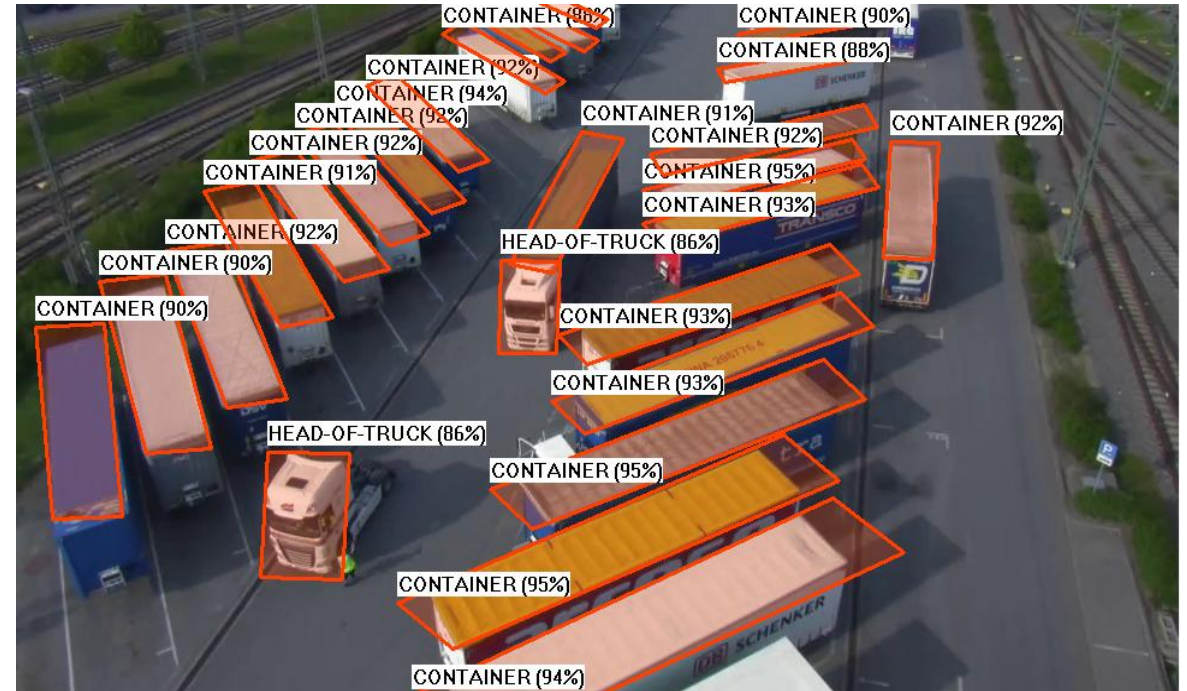
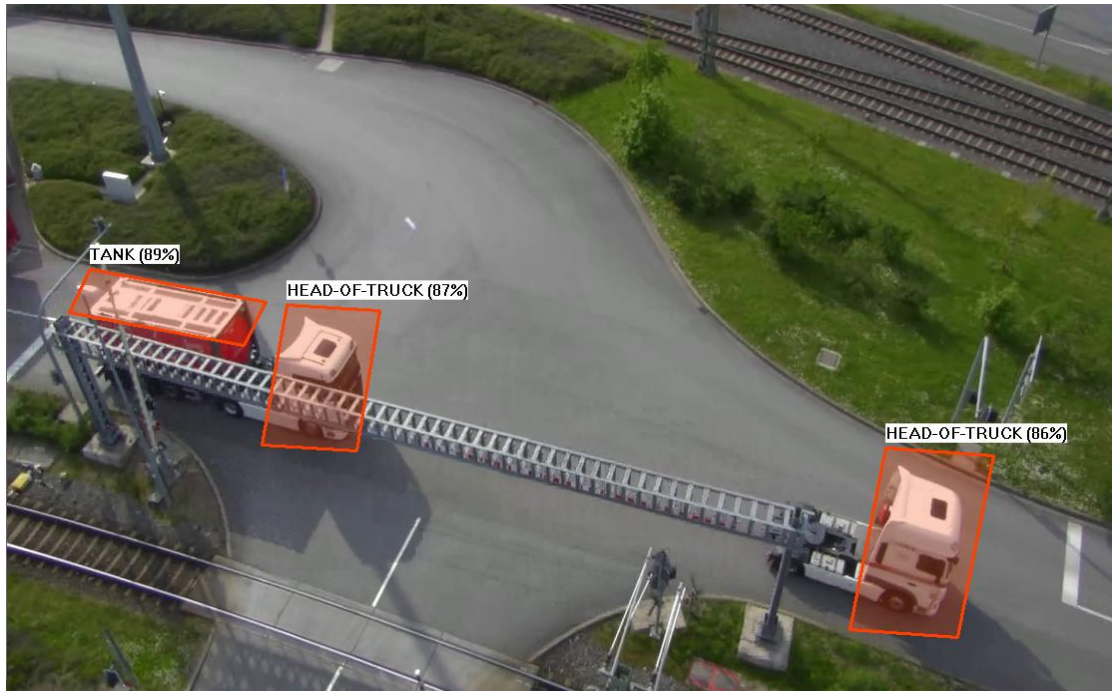


= ?

SEE AREA DEMO AT C-74

# From gate to yard

CCTV has eyes on every asset



SEE AREA DEMO AT C-74

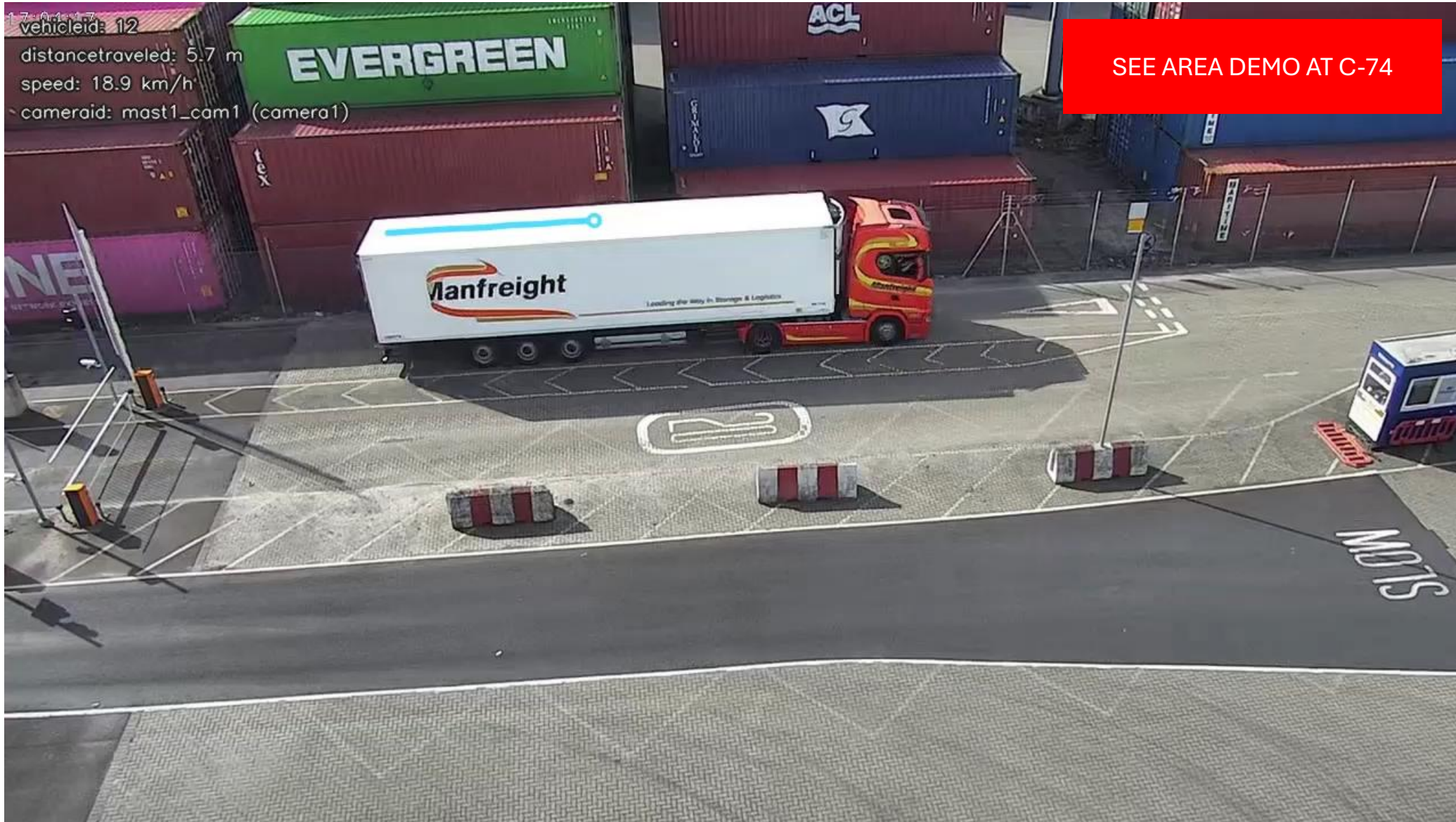
# Visy AREA

## Accurate real-time data

- Identify assets at the gate  
What is coming in? Where should it go?
- CCTV cameras follow the assets  
Where is it really going?
- Share accurate location with TOS  
Confirm final location for operations



# VISY AREA IN ACTION



# VISY AREA OUTPUT

## SELECTED TRAILER

VISY-2841

TRACK ID

VA-241945-2879

GATE-IN TIME

14:35:22

LPR · PLATE

SE · ABC 123 ✓

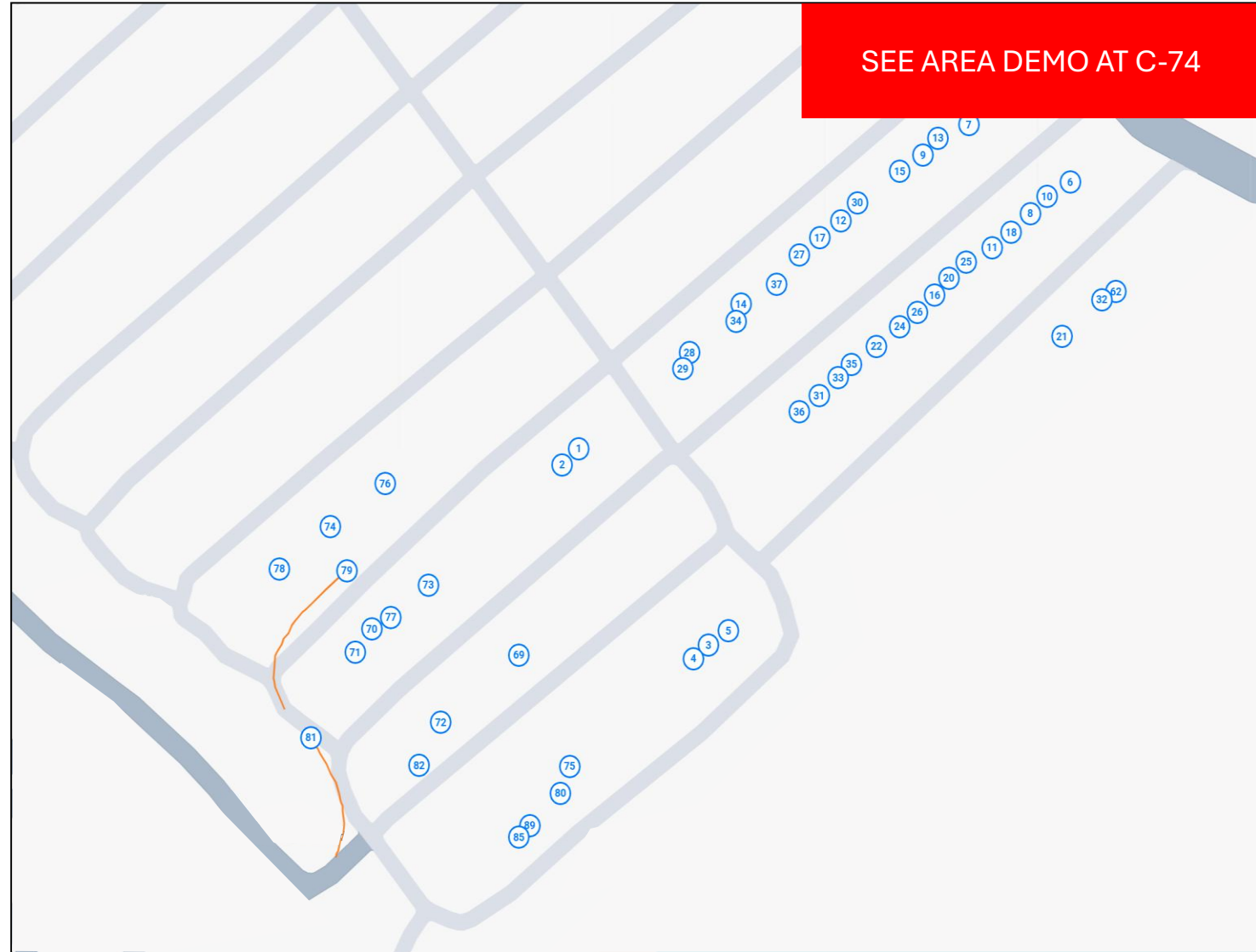
CURRENT BAY

B14 ≠ B17 planned

BOOKED VESSEL

M/S Visy Seaways

SEE AREA DEMO AT C-74



[SEE AREA DEMO AT C-74](#)

# Every trailer location is known

Results?

# 25%

Faster loading times

BASELINE



1h 40m

CORRECTED



1h 15m

**-25 min**

*Real customer site in Europe*

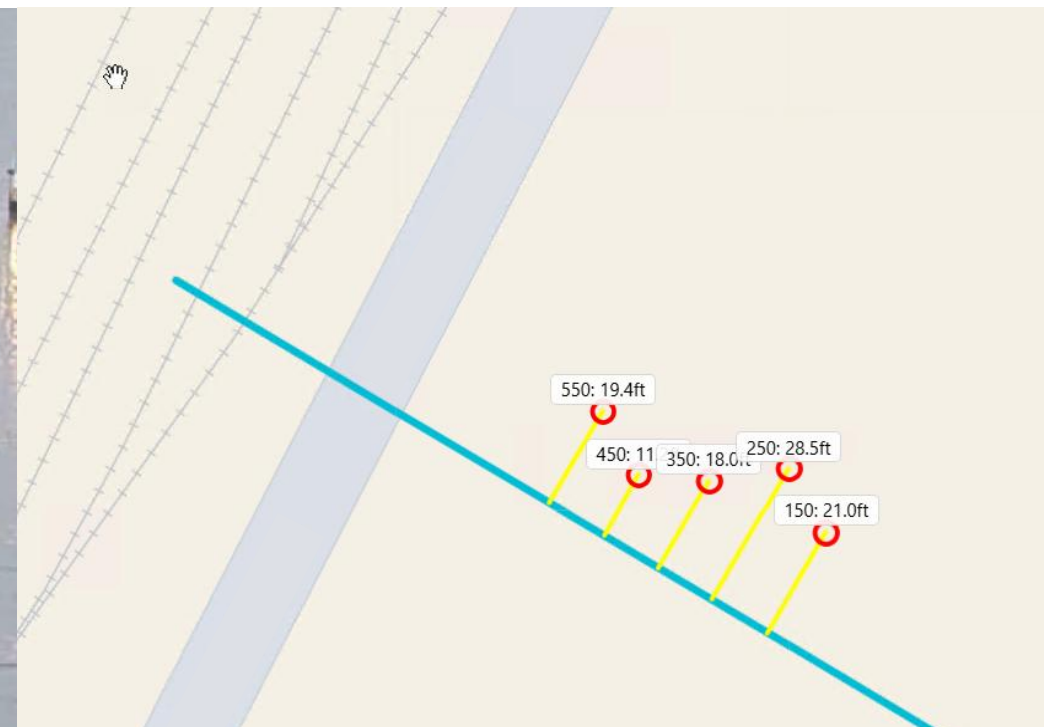
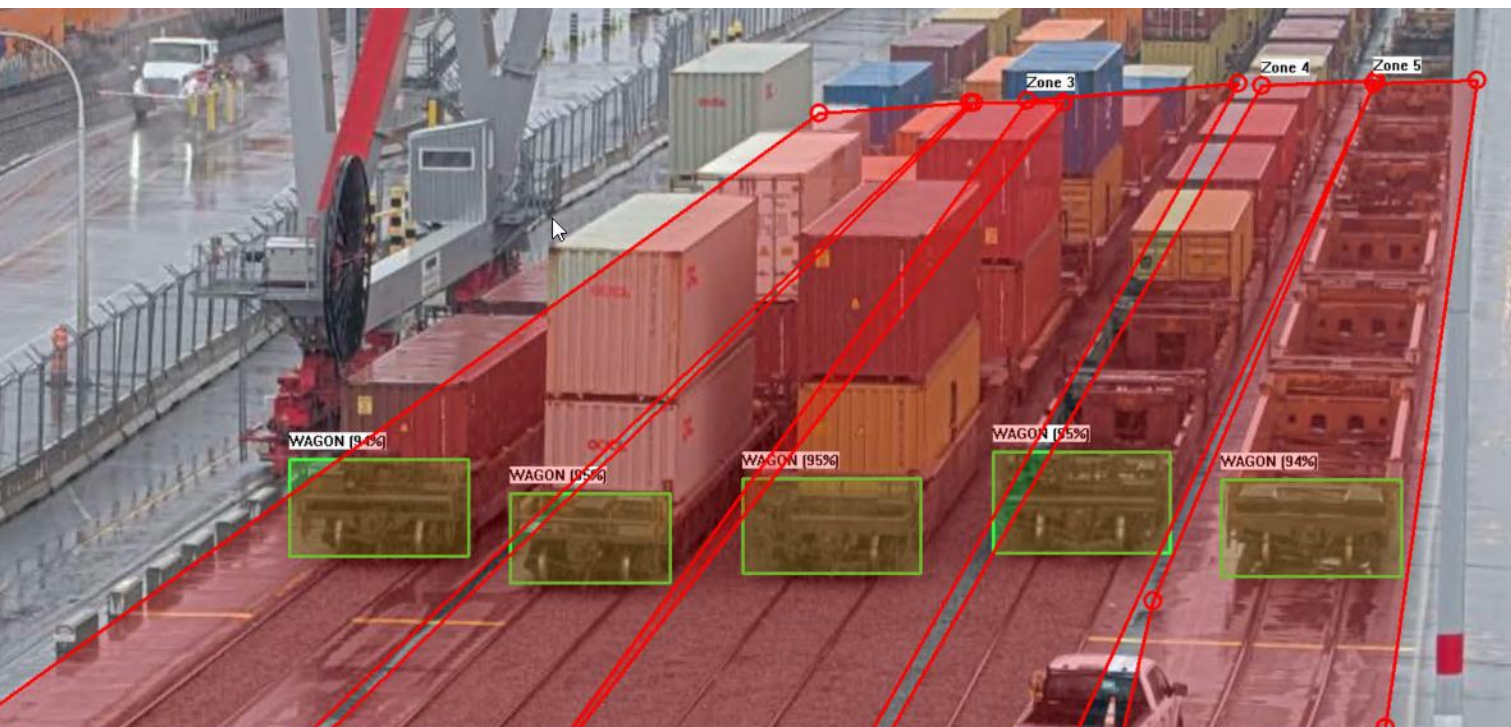
Save:

- Time
- Fuel
- CHE wear and tear
- Assets per shift

# Wagon location

## AI Vision for rail wagon distance measuring

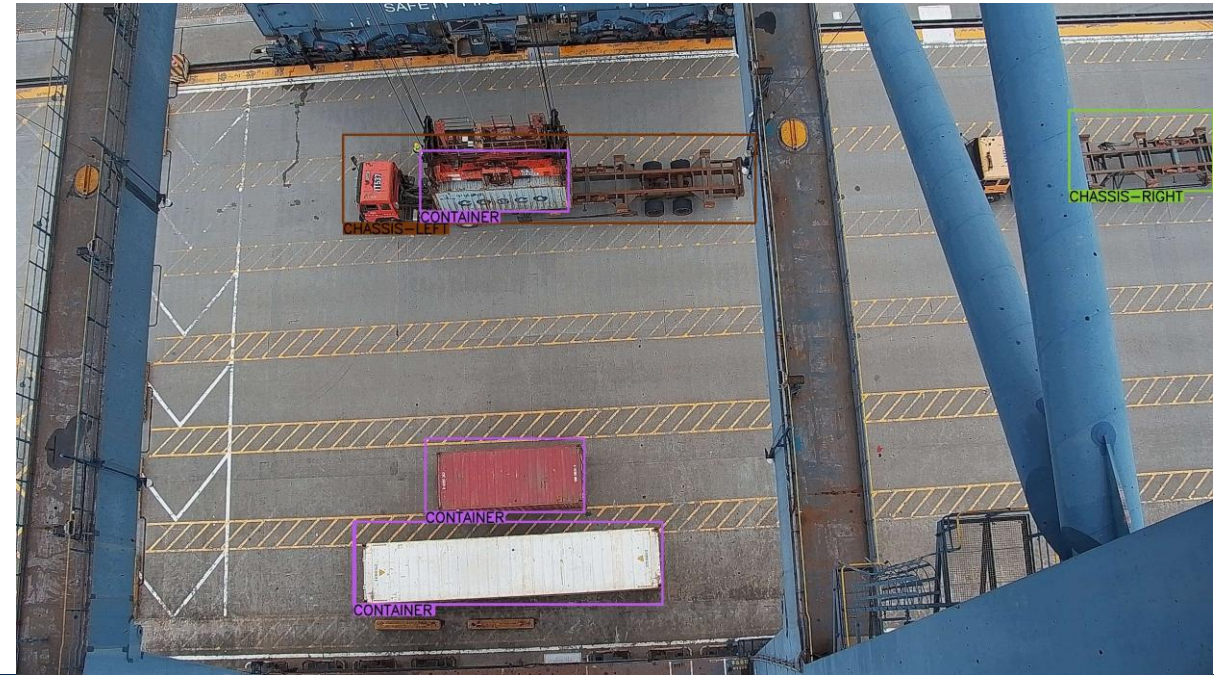
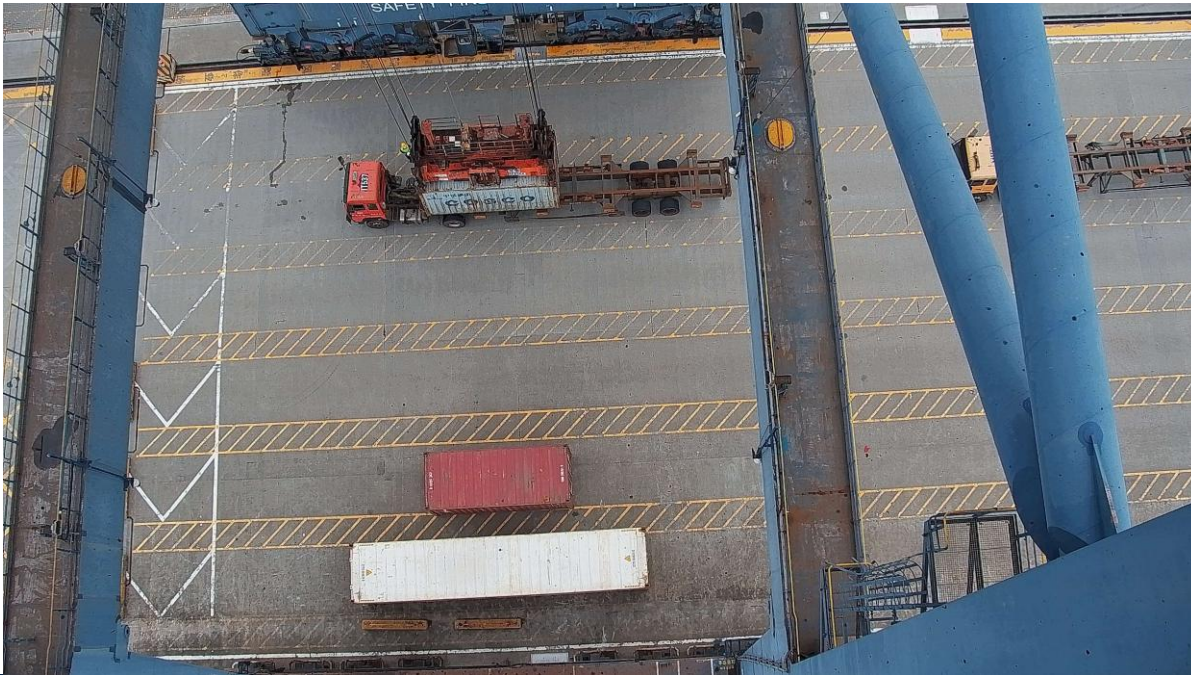
- **Problem:** How to know the actual location of each wagon for operations?
- **Visy:** Measure the distance of the first wagon from the defined target line and update PDS

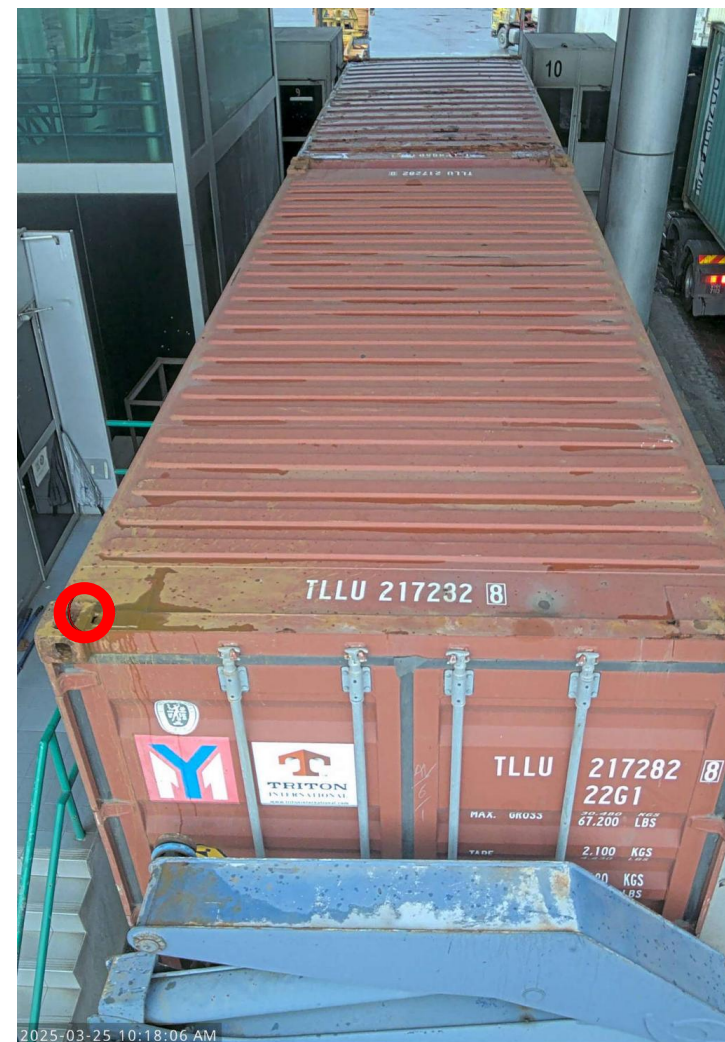


# Vehicle Alignment System (VAS) for STS operations

## AI vision tech for truck positioning

- **Problem:** How to align assets for faster STS operations?
- **Visy:** VAS sees the chassis and informs driver how to reposition





## Key takeaways

- Vision technology has many new applications that were previously unthinkable
- Modern AI is faster and more accurate than humans
- Simple applications add real operational value
- Interoperability and data sharing provide site, region and global benefits for the industry



Stand **VISY C-74**  
Hamburg, Germany  
19 May 2026

## CONTACT

**John Lund**

Sales & Marketing Director

john.lund@visy.fi

+358 50 477 9504



LinkedIn [www.linkedin.com/in/johnlund/](https://www.linkedin.com/in/johnlund/)

## VISY

Hatanpään valtatie 34 D, 3rd Floor

33100 Tampere, Finland

Tel.: +358 (0)3 211 0403

[www.visy.fi](http://www.visy.fi) | [sales@visy.fi](mailto:sales@visy.fi)